

# Case Study

## PLATFORM REMEDIAL WORKS - ROSEWOOD, QUEENSLAND

**Client:** Queensland Rail  
**Contractor:** Australian Marine & Civil

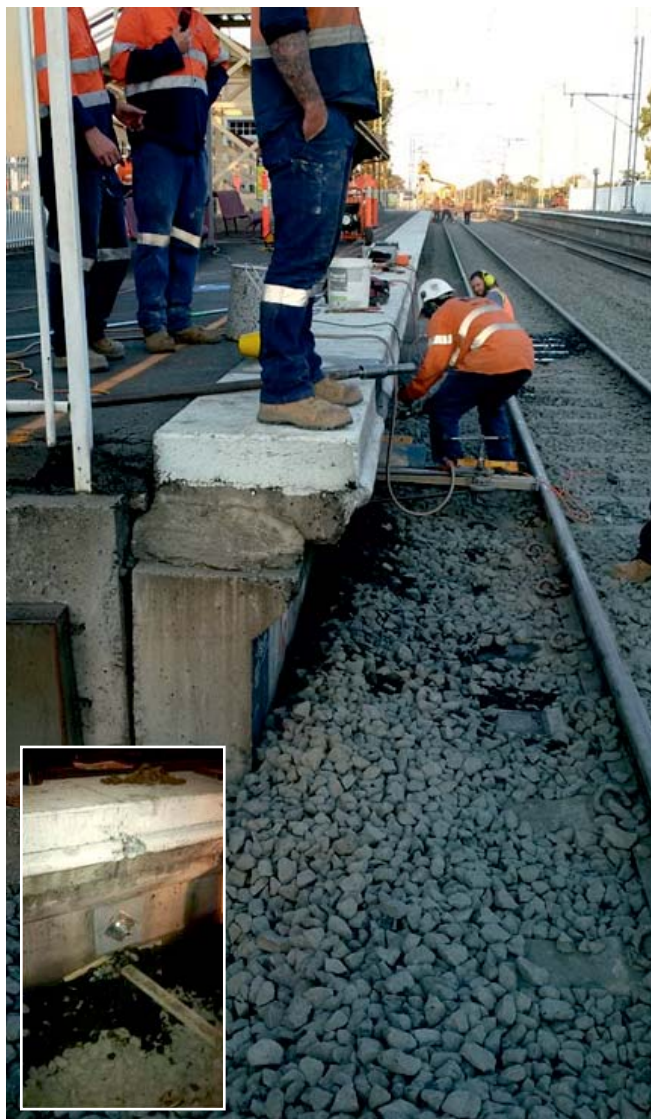


### PROJECT SPECIFICATION

The station in Rosewood was built in the 1960s and the west side of the Down Main platform was suffering from subsidence up to 200mm. A permanent anchoring solution was required to stabilize the 1.5m high platform wall with a Working Load of 11 kN per anchor specified.

### PROJECT SOLUTION

Platipus B4 anchors were installed at 1m centres through 200mm diameter core holes cut in the platform walls. Each anchor was driven to 6m, loadlocked and then Proof Loaded to 20kN. Cirtex Australia provided on-site advice ensuring the installation was completed with the allotted 12 hour track possession.



180416